

UNIVERSITY OF CALIFORNIA,

DAVIS

panhellenic

2021

RECRUITMENT
GUIDE

TABLE OF CONTENTS

1	Welcome
2	The Center for Student Involvement- Sorority & Fraternity Life
3	Davis Collegiate Panhellenic Association
4	Panhellenic Executive Board
5	Panhellenic Presidents
6	Panhellenic Delegates
7	Letter from our VP and Asst. VP of Recruitment
8	Chapter Recruitment Chairs
9	Recruitment Counselors
11	Recruitment Schedule & What to Wear
14	Greek Alphabet
15	Greek Speak
16	PNM Bill of Rights
17	PNM Code of Ethics
18	Values Based Recruitment
19	Values Worksheet
20	Recruitment Conversations
21	Recruitment Tips
22	Time Commitment & Expectations
23	Academics
24	Membership Recruitment Acceptance Binding Agreement
26	The Greek Community at UC Davis
27	Frequently Asked Questions
30	Panhellenic Sorority Houses Map

OUR CHAPTERS & FINANCE INFORMATION

- 32** Alpha Chi Omega
- 33** Alpha Delta Pi
- 34** Alpha Phi
- 35** Chi Omega
- 36** Delta Delta Delta
- 37** Delta Gamma
- 38** Kappa Alpha Theta
- 39** Kappa Kappa Gamma
- 40** Pi Beta Phi
- 41** Sigma Alpha Epsilon Pi
- 43** Finance Information

THE DAVIS PANHELLENIC COUNCIL *Welcomes You!*

President

Caroline Pogostin

dcpa.president@gmail.com



VP of Recruitment

Kayla Confetti

dcpa.recruitment@gmail.com



CONTACT INFORMATION



[@davis.panhellenic](https://www.instagram.com/davis.panhellenic)



www.davispanhellenic.org

CENTER FOR STUDENT INVOLVEMENT

Sorority & Fraternity Life



Assistant Director

**Valerie Lamarre-
Laurent**

jvlamarrelaurent@ucdavis.edu

Panhellenic Advisor



Coordinator

Payton Troske

pagates@ucdavis.edu

Recruitment Advisor

CONTACT INFORMATION



Memorial Union 442



[@ucdavissfl](https://www.instagram.com/ucdavissfl)



<https://csi.ucdavis.edu/>

DAVIS COLLEGIATE PANHELLENIC ASSOCIATION

WHO ARE WE?

The Davis Collegiate Panhellenic Association (known as DCPA) is an organization that consists of a council of 7 executive positions and 10 chapter delegates, as well as a larger community of 1,000+ collegiate women who are active members of the 9 National Panhellenic Conference chapters and 1 associate chapter on campus.

The DCPA executive board is the governing body of DCPA and is a great way to become involved in the Panhellenic Community! There are seven executive positions that oversee and run events such as programming and education modules, philanthropies, study hours, volunteer programs, sisterhoods and recruitment. In addition to these positions, each chapter has an elected representative on the council, each sharing information, concerns, and accomplishments on behalf of their respective chapter. These Panhellenic Delegates are the main route of communication between the council and the chapters.

PHILANTHROPY:

The Davis Collegiate Panhellenic Association is proud to support our philanthropy, Cal Aggie Camp. Cal Aggie Camp is a UC Davis program founded in 1961, and is a free summer camp for foster children in the greater Sacramento area and run entirely by UC Davis students! Many members of the Panhellenic community have become counselors themselves! Each year, the community raises funds to sponsor numerous campers, and helps to provide an amazing summer experience for children who normally do not have such opportunities.

PANHELLENIC EXECUTIVE BOARD



CAROLINE POGOSTIN
President



Gigi BOND
Executive Vice President



KAYLA CONFETTI
VP of Recruitment



LAURA BAQUERIZO
Asst. VP of Recruitment



SAMANTHA BOUDAIE
VP of Education



AUDREY MECHALI
VP of Finance



MARIELA PADILLA
VP of Communication

A LETTER FROM OUR *VP and Assistant VP of Recruitment*



Dear Potential New Members,

We are so excited for you to be a part of our Panhellenic community here at UC Davis! Here in our Panhellenic community we strive to empower women and inspire our members to empower each other. Recruitment this year is different than anything we've ever done before, but we are working to make it the most enjoyable experience possible. We will continue to make sure that all members of recruitment are safe and in good health. We can't wait for our new members to join our chapters and allow us to be a part of their experience here at UC Davis.

Here are some things to keep in mind as you go through the recruitment process:

- Be YOU! You will find a home that best fits you in our community if you stay true to yourself and your values.
- Remember your values. Each chapter has different values and it's important to remember yours when making connections in the Panhellenic community.
- Be open and have a positive attitude. Everything will work out the way it is supposed to if you allow all possibilities a chance. Staying positive will bring you one step closer to finding your place in our community.

Just like anything new in life, recruitment can be a scary process, but we promise it'll be worth it in the end! The friends and memories you make during recruitment and after will be with you for the rest of your life. This is the beginning of an amazing chapter! We look forward to seeing how each and everyone of you impacts our Panhellenic Community here at UC Davis.

Panhellenic Love,

Kayla Confetti and Laura Baquerizo

PANHELLENIC PRESIDENTS

Chapter presidents are an integral part of the success of Panhellenic community. They work with members of their chapters, members of other Greek organizations on campus, and alumnae, to make our community even stronger and cultivate a welcoming environment.



**MCKENNA
GRIFFIN**

Alpha Chi Omega



**CAMILLE
PON**

Alpha Delta Pi



**FAITH
CULPEPPER**

Alpha Phi



**TAVIEN
PHAN**

Chi Omega



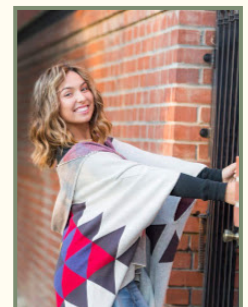
**SABRINA
BLOCH**

Delta Delta Delta



**ALEX
NEVES**

Delta Gamma



**SAMANTHA
GUERRERO**

Kappa Alpha
Theta



**LAUREN
CHRISTIE**

Kappa Kappa
Gamma



**ISABELLE
ZUROSKE**

Pi Beta Phi



**SHACHAR-LEE
YAAKOBVITZ**

Sigma Alpha Epsilon
Pi

PANHELLENIC DELEGATES

Panhellenic delegates act as a liaison between their individual chapters and the Panhellenic Executive Board. By attending weekly meetings, serving on committees, and stepping in when needed, these women help direct their chapter towards a productive and cohesive Panhellenic community.



**KIOKO
WIDJAJA**
Alpha Chi Omega



**MAYA
VARGAS**
Alpha Delta Pi



**VERONICA
MISHRIKI**
Alpha Phi



**CAITLIN
LOVENTHAL**
Chi Omega



**SHELBY
EASLER**
Delta Delta Delta



PI RHO CHI
Delta Gamma



**HAILEY
DALTON**
Kappa Alpha
Theta



**MAILE
WALLACE**
Kappa Kappa
Gamma



**ECE
TANBOGA**
Pi Beta Phi



**RONI
AYALON**
Sigma Alpha
Epsilon Pi

CHAPTER RECRUITMENT CHAIRS

Our Chapter Recruitment Officers work all year long to deliver a fair and exciting recruitment process for all PNMs and active members. This year they are working extra hard to ensure that the virtual recruitment process goes off without a hitch and PNMs find their home in our community!



**MADDIE
PAYNE**

Alpha Chi Omega



**ASHLEY
JIAN**

Alpha Delta Pi



**MICHAELA
SANDERS**

Alpha Phi



**HAILEY
PETERSON**

Chi Omega



**SUSMITA
BAGCHI**

Delta Delta Delta



**BROOKE
GUMATAOTAO**

Delta Gamma



KATE ILSEY

Kappa Alpha
Theta



**JESSICA
POBANZ**

Kappa Kappa
Gamma



**CARMEN
DONANTE**

Pi Beta Phi



**ABBY
SIEGEL**

Sigma Alpha
Epsilon Pi

RECRUITMENT COUNSELORS

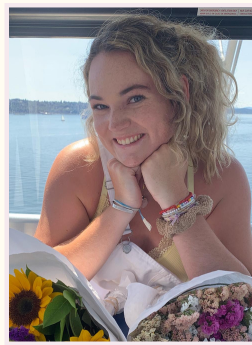
A Pi Rho Chi is also known as a Recruitment Counselor. They serve as a guide and mentor for potential new members as they go through the recruitment process. Before recruitment begins, each PNM will be assigned a Pi Rho Chi who will be their point-of-contact until recruitment is over. Each Pi Rho Chi is a member of a chapter here at Davis, who has disaffiliated from their sorority in order to provide an unbiased support system.



Cat E.



Clara F.



Colleen P.



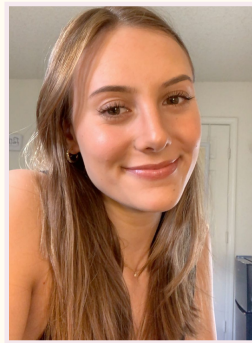
Connie W.



Erika C.



Erin N.



Faith H.



Georgia H.



Ginevra A.



Ida M.



Jasmine S.



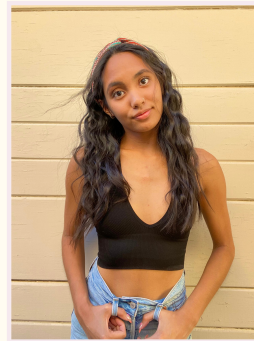
Jillian Y.



Judith L.



Lucia M.



Marilyn M.



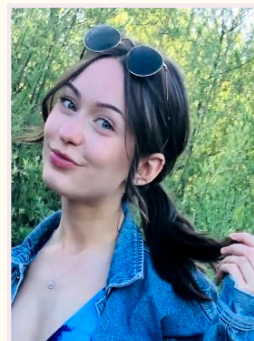
Maya J.



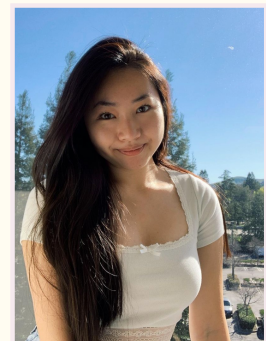
Natalie Y.



Nina S.



Olivia B.



Renee W.



Rylee B.



Stephanie D.



Taylor G.



Taylor S.



Kelly W.



Taylor W.

*On Bid Day your
Pi Rho Chi will
reveal what chapter
they're in!*

RECRUITMENT SCHEDULE

& What to Wear

Davis Collegiate Panhellenic Association 2021 Recruitment Schedule by Date and Time

Saturday, September 25th - Go Greek Day (Virtual)

Go Greek Day	Duration- 30 Minutes
Event 1	10:00-10:30 A.M.
Event 2	10:50-11:20 A.M.
Event 3	11:40-12:10 P.M.
Event 4	12:30-1:00 P.M.
LUNCH	1:00-2:20 P.M.
Event 5	2:20-2:50 P.M.
Event 6	3:10-3:40 P.M.
Event 7	4:00-4:30 P.M.
Event 8	4:50-5:20 P.M.
Event 9	5:40-6:10 P.M.
Event 10	6:30-7:00 P.M.

20-minute rotations between events

Remember that since some events will take place over Zoom, only your top half is visible. We encourage PNMs to dress however they feel comfortable and feel like themselves. Each day gets a little bit fancier, with Preference being the most formal. Dress like you're going to an interview and feel like you are presenting your best self!

RECRUITMENT SCHEDULE

Sunday, September 26th - Philanthropy Day (Virtual)

Philanthropy Day	Duration- 35 Minutes
Event 1	10:00-10:35 A.M.
Event 2	10:55-11:30 A.M.
Event 3	11:50-12:25 P.M.
Event 4	12:45-1:20 P.M.
Lunch	1:20-2:40 P.M.
Event 5	2:40-3:15 P.M.
Event 6	3:35-4:10 P.M.
Event 7	4:30-5:05 P.M.
Event 8	5:25-6:00 P.M.

Friday, October 1st - Sisterhood Evening

Sisterhood Evening	Duration- 40 Minutes
Event 1	4:30-5:10 P.M.
Event 2	5:30-6:10 P.M.
Event 3	6:30-7:10 P.M.
Event 4	7:30-8:10 P.M.
Event 5	8:30-9:10 P.M.
Event 6	9:30-10:10 P.M.

RECRUITMENT SCHEDULE

Saturday, October 2nd - Preference Evening

Preference Evening	Duration- 60 Minutes
Event 1	4:00-5:00 P.M.
Event 2	5:20-6:20 P.M.
Event 3	6:40-7:40 P.M.

Sunday, October 3rd - Bid Day

DCPA Presentation	11:00am
Bids Released	12:00 pm
Chapter Bid Celebrations	All Bid Day celebrations will be done by 6pm at the latest.

GREEK ALPHABET

Α

Alpha

Β

Beta

Γ

Gamma

Δ

Delta

Ε

Epsilon

Ζ

Zeta

Η

Eta

Θ

Theta

Ι

Iota

Κ

Kappa

Λ

Lambda

Μ

Mu

Ν

Nu

Ξ

Xi

Ο

Omicron

Π

Pi

Ρ

Rho

Σ

Sigma

Τ

Tau

Υ

Upsilon

Φ

Phi

Χ

Chi

Ψ

Psi

Ω

Omega

GREEK SPEAK

- **Active Member** - A sorority member currently in college who has been formally initiated by her chapter and actively participates in events.
- **Alumna** - An initiated sorority member who has graduated.
- **Bid** - A formal invitation to join a sorority or fraternity
- **Big** - An active member of the chapter who is paired with a new member as a mentor
- **Chapter** - An affiliated name of an inter/national organization recognized on campus
- **Continuous Open Bidding (COB)** - After the formal recruitment process has ended chapters may continue to offer bids in an informal process
- **Formal Recruitment**- The process by which sororities show Potential New Members their unique, personal attributes. This process is also the chance for a Potential New Member to discover the core values of each specific sorority, and to determine which chapter best aligns with her own personal values.
- **Initiation** - The formal ritual ceremony in which the new member is granted full membership rights and responsibilities of the sorority. These ceremonies are often secret and never involve hazing. Once you are initiated into an NPC sorority, you are not eligible for membership into any other NPC sorority.
- **Legacy** - A PNM whose family member is, or was, an alumnus of a Panhellenic organization. Each chapter has its own definition and policies around legacy status. A sorority is not obligated to extend a bid to legacies.
- **MRABA: Membership Recruitment Acceptance Binding Agreement** - A document that each PNM completes immediately following preference round of events stating her membership preferences. The PNM ranks the chapters she would accept a bid from in preferential order. This is a binding agreement, stating that the PNM is willing to accept a bid from any chapter she lists.
- **NPC: National Panhellenic Conference** - Founded in 1902, NPC provides support and guidance for its 26 members inter/national sororities/women's' fraternities and serves as the national voice on contemporary issues of sorority life. NPC serves as the umbrella organization for Davis Panhellenic.
- **New Member**- A woman who has joined a sorority, but has not yet been initiated as an active member
- **Philanthropy**- an institution or charity that a chapter helps support financially through events held during the school year.
- **Pi Rho Chi or Recruitment Counselors** - A sorority member who has disaffiliated from her chapter during Formal recruitment to assist PNMs through the process.
- **Potential New Member (PNM)**- A woman who is looking to join a sorority, going through the recruitment process

POTENTIAL NEW MEMBER

Bill of Rights!

- The right to be treated as an individual
- The right to be fully informed about the recruitment process
- The right to ask questions and receive true and objective answers from recruitment counselors and active members
- The right to be treated with respect
- The right to be treated as a capable and mature person without being patronized
- The right to have and express opinions to recruitment counselors
- The right to have inviolable confidentiality when sharing information with recruitment counselors
- The right to make informed choices without undue pressure from others
- The right to be fully informed of the NPC Unanimous Agreements implicit in the Membership Recruitment Acceptance Binding Agreement (MRABA)
- The right to make one's own choices and decisions as well as accepting fully responsibility for the results of those decisions
- The right to have a positive, safe, and enriching recruitment and new member experience



POTENTIAL NEW MEMBER

Code of Ethics

Potential New Member Code of Ethics and Agreement of Mutual Respect at the University of California, Davis College Panhellenic

“We, as Undergraduate Members of women’s fraternities, stand ... for maintenance of fine **standards**...for service through the development of character inspired by the close contact and deep **friendship** of individual fraternity and Panhellenic life. The opportunity for wide and wise human service, through **mutual respect and helpfulness**, is the tenet by which we strive to live.”

This is accomplished by abiding to the following agreements:

- A potential new member (PNM) shall attend recruitment orientation and all membership recruitment events for which she receives invitations.
- Respect for the membership recruitment process is expected at all times. This includes respect toward chapter members, recruitment counselors, Panhellenic officers, faculty and staff, chapter members and other potential new members. PNM's should refrain from sexist, homophobic, racist or otherwise abhorrent conversations.
- I understand my rights under the PNM Bill of Rights and if I experience discrimination I know how to report it to the College Panhellenic.
- Potential new members as well as sorority members must do their best to not touch or shake hands in any way. This helps prevent the spread of illness.
- Membership recruitment is a substance-free process. Women may not use or be in the presence of drugs and alcohol during the membership recruitment period. Violation of this rule will result in immediate removal from the membership recruitment process.
- Potential new members should be fully aware of the financial obligations of membership before accepting a bid. It is to the PNM's advantage to ask questions during recruitment events if there are questions about finances.
- Potential new members agree to treat the chapter videos and virtual recruitment parties as confidential. Potential new members will not share any video or virtual recruitment event, including a video in its entirety, or recordings, clips, screen shots, and/or quotes from video or virtual recruitment event. Potential new members understand that any breach of this agreement could result to disciplinary action.
- Potential new members understand that if they sign a Membership Recruitment Acceptance Binding Agreement (MRABA) after preference round, they are bound to that document and the chapter that extends them a bid. This means that the PNM is ineligible for an invitation to membership from another NPC organization until the next primary recruitment on that campus.

Failure to abide by the expectations stated above will result in the review of your status as a potential new member. The first offense will result in a warning from Panhellenic Recruitment Staff. The second offense will result in being released from the 2020 Panhellenic Recruitment process. If the first offense is determined to be severe enough by the Panhellenic Recruitment Staff, a potential new member could be subject to an immediate release from the Panhellenic Recruitment process.

VALUES-BASED RECRUITMENT

WHAT IS VALUES BASED RECRUITMENT?

Values Based recruitment is a process where Potential New Members (PNMs) discover which chapter is the best personal fit through the comparison of one's own personal values to the chapter's values.

WHY IS VALUES-BASED RECRUITMENT IMPORTANT?

Values based recruitment is important because this style of recruitment helps the PNMs develop more in-depth connections with active members through shared interest and values. Moreover, values based recruitment also provides the PNM with a realistic expectation of membership before joining the chapter.

HOW DO I KNOW WHAT MY OWN VALUES ARE?

Your values are fundamental beliefs that guide your individual actions. These values are ideals that you believe are important in the way you live and work, and these are the beliefs that help determine your priorities in life. On the next page is a list of common values, you will choose five values that you believe are important in your own individual life, and use them as a guide through the process of formal recruitment



VALUES WORKSHEET

CHOOSE 5 VALUES THAT ARE IMPORTANT TO YOU:

acceptance	cooperation	growth
accountability	courage	happiness
achievement	creativity	health
advancement	curiosity	honesty
adventure	decisiveness	independence
aesthetic	diversity	initiative
authenticity	economic security	integrity
authority	effectiveness	intellect
balance	efficiency	involvement
belonging	empathy	justice
challenge	energy	kindness
change	enthusiasm	knowledge
collaboration	excellence	leadership
community	fairness	learning
companionship	faith	love
compassion	family	loyalty
competence	financial gain	money
competition	fitness	open-mindedness
confidence	forgiveness	opportunity
contribution	freedom	optimism
control	friendship	participation

ANSWER THE PROMPTS BELOW TO HELP YOU DISCOVER WHY THESE VALUES ARE IMPORTANT IN YOUR LIFE:

- In what ways does this value appear in your life?
- Is it present in your relationship with others?
- How do you think these values influence your actions?
- How would you like to see this value appear in your sorority experience?

RECRUITMENT CONVERSATIONS

During the recruitment process, you will spend a significant amount of time speaking to active members in each chapter. Here's what to expect and how to get the most out of each conversation!

OPEN ENDED VS. CLOSE ENDED QUESTIONS

During recruitment, you will come across two types of questions, close ended and open ended. Close ended questions are questions that can be answered with either a yes or no, or a very brief response, such as "where are you from?" or "what is your major?". On the other hand open ended questions are questions that require a more in depth response and encourage a fuller, more meaningful response on behalf of the recipient. Often times, close ended questions can be shaped into open ended questions, turning "where are you from?" into "tell me about your hometown" While close ended questions are appropriate for some situations, it is best to use open ended questions during recruitment in order to receive a more in depth perspective of the chapter and its members each day.

EXAMPLE QUESTIONS TO ASK ACTIVE MEMBERS:

PHILANTHROPY DAY:

- What type of events during the year does your chapter put on to support your philanthropy?
- Are there opportunities for service within the chapter? How are members able to engage with your philanthropy throughout the year?
- Why do you believe your chapter's philanthropy is important?
- What drew you to going through the recruitment process? How did joining a sorority fulfill these expectations?
- How do you balance your membership in a sorority and other commitments in your life?
- How does the sorority support you in your college experience?

SISTERHOOD DAY:

- What type of support has your sisterhood provided during your college experience?
- How does your chapter encourage bonding between your members?
- What do you individually value most about your chapter's sisterhood?

PREFERENCE EVENING:

- How has your membership in the chapter helped you grow as an individual? What has the chapter done to provide you with the opportunity to grow?
- Why is membership in this chapter special? What are the qualities that you believe your members share?
- Has membership in this chapter changed your college experience for the better? If so, how?

RECRUITMENT TIPS

- BE YOURSELF!
- It's very important to be ON TIME!
- Turn off cell phones to avoid unwanted calls during the events.
- Look at each sorority as a whole. Do not just judge it by the one or two women that you meet. Be open to all sororities and what they have to offer.
- TAKE NOTES between rounds about conversations that stuck out to you or women that you really connected with.
- Be assured it is normal to have less than the maximum number of chapters to attend on a given day.
- Make sure to give yourself time to eat and drink water between rounds and get enough sleep!
- Recruitment Counselors are there to help and answer any questions that you have.
- If you have any time conflicts, please report them to your Recruitment Counselor ASAP.
- The sorority women are just as nervous as you are and can't wait to talk to you!



TIME COMMITMENTS & EXPECTATIONS

NEW MEMBER EDUCATION

The New Member Education period begins after Bid Day, and usually lasts between 6-8 weeks, culminating in Initiation. Each chapter has an organized program designed to educate its new members on the history, standards, and overall composition of their organization. These educational sessions are led by the New Member Educator, a sister who has been elected to that position to run the program. Meetings usually occur once a week and are required.



Tip:

You get what you give when it comes to participation in your chapter. Besides, mandatory events, you have the ability to decide how much time and effort you put into your chapter and what you hope to get out of it. While we want you to be as involved as possible, we know that women often have other commitments and jobs!

ACTIVE PARTICIPATION

Along with new member education meetings, you will also be required to attend Chapter Meetings which typically occur once a week. Because of the virtual aspect of Fall Quarter, these meetings will likely occur less frequently. You will also be encouraged to participate in Greek-wide events and philanthropy events that are fun and a great way to meet other members of the Greek Community. In addition to that, each chapter supports a unique philanthropic effort, to which they donate extensive time and money. Chapters host a variety of competitions, events, and fundraisers to support their partner organizations. As a member, you will be expected to support and attend philanthropy events, although this coming year will look different.

ACADEMICS

ACCORDING TO UC DAVIS GREEK LIFE STATISTICS, THE AVERAGE STUDENT IN A SORORITY OR FRATERNITY AT UC DAVIS TYPICALLY HAS A HIGHER GRADE POINT AVERAGE (GPA) THAN A NON-GREEK STUDENT.



Even though Panhellenic does not require a specific grade point average to participate in Formal Recruitment, each chapters has a minimum grade point average requirement for membership.

Besides long-lasting friendship, philanthropic success, and an amazing college experience, sorority women at the University of California, Davis strive for excellence in academics.



Many chapters have study hours, mentors, and other sources of programming to enhance their member's academic performance. Many chapters also offer scholarships and recognize success via awards for academic excellence.

MEMBERSHIP RECRUITMENT ACCEPTANCE BINDING AGREEMENT

Introduction: Agree to binding electronic contract and electronic signature. Initial each statement.

____ This form is called the Membership Recruitment Acceptance Binding Agreement, or "MRABA." I understand that it is a contract with the National Panhellenic Conference ("NPC").

____ I choose to complete this MRABA because I participated in the primary membership recruitment process ("Recruitment") at the University of California, Davis

ELECTRONIC SIGNATURE ONLY

____ I consent to this electronic contract. I agree to electronically sign the MRABA. These terms are defined by the Electronic Signatures and Global and National Commerce Act ("E-Sign") and the Uniform Electronic Transactions Act ("UETA").

____ I agree that this MRABA and my electronic signature is valid, enforceable, and binding under E-Sign and UETA.

Part 1: Withdrawing or Continuing in Recruitment. Initial one of the following options:

____ I want to withdraw from Recruitment. I will not join a sorority now. I could join a sorority in the future by participating in the continuous open bidding ("COB") process. I will not complete this contract. (Next Step: Continue to Part 5.)

____ I am continuing in Recruitment. (Next Step: Continue to Part 2.)

Part 2: Show that you understand the ranking process. Initial each statement.

By signing the MRABA, I understand and agree that each of these statements is true:

____ I am willing to accept an invitation to membership ("bid") from any sorority I list in Part 4.

____ I will rank each sorority in the order of my preference for receiving a bid.

____ If I attended a sorority's preference event, and I would not accept a bid from that sorority, I do not have to rank that sorority.

____ I understand that if I choose to rank fewer sororities, I might not receive a bid through Recruitment.

Part 3: Show that you understand the effect of submitting the MRABA. Initial each statement below.

By signing the MRABA, I understand and agree that each of these statements is true:

____ After I submit this form, I cannot change my rankings. I cannot add or delete any sororities to my rankings.

____ If I do not receive a bid from any sorority I ranked, I understand I am eligible to join any sorority later, through the COB process. I understand that not all sororities will recruit through COB.

____ If I do receive a bid from a sorority I ranked, but I choose not to accept that bid, I understand that I am not eligible to join any other sorority on this campus until the start of the next Recruitment.

Part 4: Rank your preferences. Rank in order of your preference for receiving a bid.

1st Preference: _____

2nd Preference: _____

Part 5: Sign the contract.

I have read and understand this MRABA. By signing or submitting this MRABA, I agree to be bound by its terms. I agree that completing this form electronically has the same legal effect of completing a paper version.

I have never been initiated into an NPC sorority. I understand that if I join an NPC sorority and choose to become an initiated member of that sorority, I cannot join another NPC member organization, regardless of any circumstances.

Signature: _____

Date: _____

WHAT DOES SIGNING THE MRABA MEAN?

ABOUT THE MRABA

The document on the previous page is the Membership Recruitment Acceptance Binding Agreement (MRABA). The MRABA is a binding agreement that is effective for one calendar year. **By signing this document, you as a Potential New Member agree that you are willing to accept a bid for membership from any sorority that you rank on the MRABA.** If you receive a bid from any sorority that you have listed on your MRABA, and you choose not to accept it, you are not eligible to participate in Continuous Open Bidding (COB) for the school year.

WHEN DO I SIGN THE MRABA?

If you receive an invitation to the Preference round, you will make your final selection at the conclusion of your last event. Here you will rank the chapter(s) you visited on Preference Evening Friday in a preferential order. Once you complete your rankings, you will sign a copy of the MRABA. Please note that once the MRABA has been turned in to a representative of Davis Panhellenic, it cannot be altered or changed.

Prior to signing the MRABA, you have several options to consider. We suggest that you thoroughly reflect on these before signing your MRABA.

MRABA OPTIONS

- 1. You may choose NOT to complete the MRABA, thereby withdrawing from recruitment.** If you choose this option, you are eligible to accept a bid for membership from any sororities participating in Continuous Open Bidding. A small number of sororities may be able to recruit a limited number of women through the COB process after Primary Recruitment, however, this is not guaranteed.
- 2. You may choose to list any sorority whose preference event you attended and from whom you are willing to accept an invitation to membership (a bid).** Please note that you should NOT rank a sorority on your MRABA that you are absolutely not willing to accept a bid for membership. If you match with a sorority that you listed on your MRABA, it is important to note that you are bound to that sorority for one calendar year (until the next Formal recruitment), regardless of whether you officially accept their invitation for membership or not.
- 3. You may choose to limit your choices to just one sorority whose preference round event you attended and you are willing to accept an invitation to membership.** You must understand that if you chose to single intentional preference, then you are not guaranteed to receive a bid for membership. Only Potential New Members who maximize their options and list ALL of the chapters that they attended during the preference round are guaranteed to receive a bid for membership during Primary Recruitment.

If you do not receive an invitation to membership (a bid) from any of the sororities that you have listed, you are eligible for Continuous Open Bidding (COB).

THE GREEK COMMUNITY AT UC DAVIS

Besides the Davis Panhellenic Council, there are 5 other Greek Councils at UC Davis!

INTERFRATERNITY COUNCIL

The IFC serves as the governing body for international, national, and local member fraternities. The IFC is an affiliate of the North American Interfraternity Conference, a nationwide network of 66 fraternities comprising over 5500 chapters on 800 US colleges and universities. The IFC works to assist and strengthen fraternities individually and collectively, develops policy, promotes educational programming, coordinates community service efforts, and furthers intellectual accomplishment and scholarship. Each Fall IFC holds a coordinated Rush Week for all men interested in going Greek.



@ucdavisifc

PROFESSIONAL SORORITY AND FRATERNITY COUNCIL

The Professional Sorority and Fraternity Council (PSFC) was founded to foster community, collaboration and a campus presence for fraternal organizations with strong ties to academic programs and community service. The council leadership seeks to bridge the gap between the faculty at UC Davis and the greater sorority and fraternity community while providing opportunities to assist all members in transitioning from being a student to being a full-time working professional or pursuing graduate work.



@psfc.at.ucd

NATIONAL PAN-HELLENIC COUNCIL

The National Pan-Hellenic Council, or NPHC, serves as an umbrella organization for the historically African American sororities and fraternities at UC Davis. The groups on the council are representative chapters of the Divine Nine, which make up the council nationally and are represented throughout the country.



@ucd_nphc

ASIAN SORORITY AND FRATERNITY COUNCIL

The Asian Sorority and Fraternity Council (ASFC) serves as a conduit for all fraternal organizations that serve the Asian and Pacific Islander (API) community. The council leadership works closely with numerous campus departments and programs to promote API history and heritage while promoting community amongst the student body.



@davisasfc

UNITED SORORITY AND FRATERNITY COUNCIL

The United Sorority and Fraternity Council of UC Davis was founded to promote cooperation, collaboration and support to the culturally diverse sororities and fraternities on campus. The council leadership works collaboratively with the other governing councils and departments on campus to promote and connect USFC chapters across the university.



@usfc_ucdavis

FREQUENTLY ASKED QUESTIONS

LOGISTICS FAQs

Is recruitment happening and what will it look like?

Recruitment is happening! We are doing a hybrid model so the first weekend of recruitment will be virtual and the second weekend will be in person.

But this is different, will it work?

Just because it's different doesn't mean it won't work. Our Executive Board has done everything we can to keep our community safe. With that in mind, we have been following all guidelines that the state and university has decided to follow. A hybrid model will allow us to working back to in person, but we are also keeping our members safe while we do this. The women in our community are super excited to see you all and are working incredibly hard to ensure you all the best experience possible, even if it's not in a traditional way.

Why should I go through recruitment if it's virtual?

Going through recruitment and joining an organization is the highlight of many women's college career. We don't want you to miss out on this opportunity just because this process does not look like it has in the past. The Panhellenic Council has been working super hard ensure that throughout this virtual recruitment you still have the best experience as possible.

Should I just wait until Winter/Spring to go through recruitment normally?

Formal recruitment, where you get to meet all our chapters, only happens once a year in the Fall. Informal recruitment happens in the Winter and Spring Quarters, but only a few chapters do that and which ones do is always changing. We encourage you all to go through recruitment now and meet all of our chapters, but you can also go through whenever you're ready!

Can upperclassmen go through recruitment?

Yes! Any fully matriculated undergraduate/incoming student at UC Davis can go through recruitment.

Do I need to be in Davis to go through recruitment?

Since the second weekend of recruitment is in person, we highly recommend being in Davis! We are offering a virtual aspect for the second weekend for those that need it.

Where is my money going?

The money you pay when you register is being put to good use. We use that money to pay for the fees that come with the virtual platform that we are now using, recruitment counselor materials, and the PNM gift that you will receive. The fee is smaller than it has been in past years, but if any of our budget is left over it will be used for Panhellenic scholarships.

What should I wear?

For all events taking place over Zoom, only your top half will be visible. Each day gets a little fancier with Preference Evening being the most formal. We encourage all PNMs to dress how they feel comfortable and feel that they are presenting their best selves. For virtual days, dress how you would for a virtual interview. For in person days, dress like you're at brunch with family!

FREQUENTLY ASKED QUESTIONS

TECHNOLOGY FAQs

Do I need a Zoom account?

Yes, you will need a Zoom account for virtual recruitment. More specifically you will need your UC Davis Licensed Zoom account. Every UCD student has access to a paid Zoom account through the school. You will need to use this account for recruitment, and you can sign into your account at ucdavis.zoom.us and sign in with your Kerberos ID and Password. Your Pi Rho Chi will go over all this with you closer to recruitment, so don't worry!

Should I use a virtual background?

Some chapters will have their members using them, but PNMs will not need to.

What if my house is not quiet?

If your house is not quiet, you are welcome to be anywhere you want (as long as it's within CDC guidelines). You do not have to be in your own home if there are other places that work better for you. If you cannot leave your home, we recommend using earphones and sitting behind a closed door to minimize background noise.

What if I am in a different timezone than UC Davis and the timing does not work for me?

If for some reason the timing doesn't work well for you, you can reach out the recruitment team at dcpa.recruitment@gmail.com and we will try to accommodate you as much as we can.

Do I have to go to every event?

Yes, you must be present at every event that you are scheduled for. You will most likely not be scheduled to attend every event that was shown on the recruitment schedule page.

If I am not interested in a particular chapter, can I skip their event or leave my camera off?

Intentionally skipping an event can result in your removal from the recruitment process by the Panhellenic Recruitment team. Each of our chapters strive to respect each other and you and we have those same expectations for women entering our community. We ask that you respect the time and effort of each chapter by attending their event upon their invite. There is always more to learn about them!

What do I do if I have unstable WiFi or Zoom freezes?

Always make sure that you are connected to a stable WiFi connection before each round. If you experience any tech-related issues during the events, contact your Pi Rho Chi immediately. There will be options to add you to a future round, in the event that you are disconnected from a chapter.

If you need any accommodations, technology-related or otherwise, please reach out the Panhellenic Recruitment Team at dcpa.recruitment@gmail.com

FREQUENTLY ASKED QUESTIONS

JOINING/MEMBERSHIP FAQs

What are the requirements for membership?

A Potential New Member (PNM) must be a currently enrolled UCD student. Note that each chapter may have a minimum GPA requirement. All PNMs must be registered and have paid the registration fee by September 23rd, 2021 at 11:59pm.

What is a bid and does everyone get one?

A bid is an invitation to join a National Panhellenic Conference chapter. Bids are extended on the last day of recruitment and you can only receive one. The recruitment process allows Potential New Members (PNMs) and chapters to decide each others best fit. This process is referred to as "mutual selection" because the preferences of both PNMs and chapters are used to match women with their new homes. The truth is, not everyone will find a place to join or a match, but recruitment offers the opportunity for any women interested in joining a sorority the chance to do so.

What if I am not happy with the bid I receive?

Always remember that accepting a bid does not bind you to that chapter. You can choose to discontinue your New Member process at any point before Initiation. The majority of women who accept a bid from their second choice end up extremely happy in their chapter and choose to initiate. Each chapter is full of different types of women and many opportunities meaning you can find your place in any one of them! We recommend going to that chapter's bid day before making any decisions.

How will I receive my bid?

You will receive your bid on the final day of recruitment, Bid Day. You will open these with your Pi Rho Chi group and then go to your new home! If needed, you can stay with your Pi Rho Chi to discuss things if you are upset.

What if my parents/guardians don't approve of me joining?

Sororities are so much more than what people see in the media. There are many positives that come out of joining a sorority. You not only find women that support you but you raise money for your community and philanthropy, grow personally, and gain leadership experiences. In this time of virtual living, it is also a way to make instant connections as you join college, especially if you are not living on campus. Women in the Greek community also have a higher overall GPA than non-Greek students. Explaining this to your parents/guardians may help in the decision.

Will sorority life still be fun/will we have events due to COVID-19?

All of our chapters are working to find ways to be back in person, but still maintain safety for all their members! All chapters were able to participate in virtual sisterhoods, formals, philanthropies, etc. These times helped sisterhoods grow stronger!

What will dues look like?

Dues will be a little different this year due to the virtual aspect of sorority life. You will find each chapters financial information towards the end of this booklet. Each chapter also offers payment plans for women who need them and Panhellenic and National organizations also have scholarships available to help women pay for their dues.

Panhellenic Sorority Houses Map





7 P 1/250 F 11 +0.7 EV 59 35 mm



7 P 1/250 F 11 +0.7 EV 59 35 mm

KODAK PORTRA 400

47

KODAK PORTRA 400

47

KODAK PORTRA 400

CHAPTER

Spotlights



250 F 11 +0.7 EV 59 35 mm



7 P 1/250 F 11 +0.7 EV 59 35 mm



7 P 1/250 F 11 +0.7 EV 59 35 mm

47

KODAK PORTRA 400

47



KODAK PORTRA 400

47



KODAK PORTRA 400

AXΩ

Alpha Chi Omega

LOCATION:

137 C Street, Davis, CA 95616

DETAILS:

Founded: October 15th, 1885 at DePauw University

Colors: Scarlet Red and Olive Green

Flower: Red Carnation

Symbol: The Lyre

PHILANTHROPY:

Survivors of Domestic Violence

The Alpha Chi Omega Foundation

Empower Yolo



www.davisalphachiomega.com



@davisalphachiomega

AΔΠ

.....

Alpha Delta Pi

LOCATION:

513 Russell Boulevard, Davis, CA 95616

DETAILS:

Founded: May 15th, 1851 at Wesleyan Female College

Colors: Azure Blue and White

Flower: Woodland Violet

Symbol: The Diamond

PHILANTHROPY:

Ronald McDonald House Charities

Alpha Delta Pi Foundation



www.ucdavisadpi.com



@davisadpi

AΦ



Alpha Phi

LOCATION:

327 Russell Boulevard, Davis, CA 95616

DETAILS:

Founded: October 10th, 1872 at Syracuse University

Colors: Silver and Bordeaux

Flower: Lilies of the Valley & Forget-Me-Nots

Symbol: Ivy Leaf

PHILANTHROPY:

Women's Heart Health

Alpha Phi Foundation



www.ucdavisalphaphi.com



@davisalphaphi



.....

Chi Omega

LOCATION:

440 A Street, Davis, CA 95616

DETAILS:

Founded: April 5th, 1895 at University of Arkansas

Colors: Cardinal and Straw

Flower: White Carnation

Symbol: The Owl

PHILANTHROPY:

Make-A-Wish Foundation



www.chiomegadavis.com



@davischiomega



Delta Delta Delta

LOCATION:

227 First Street, Davis, CA 95616

DETAILS:

Founded: November 28th, 1888 at Boston University

Colors: Silver, Gold, & Blue

Flower: The Pansy

Symbol: The Dolphin

PHILANTHROPY:

St. Jude's Children's Research Hospital

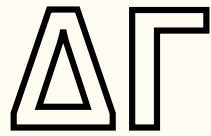
Children's Cancer Charities



www.ucdavis.tridelta.org



@ucdtridelta



Delta Gamma

LOCATION:

225 Russell Boulevard, Davis, CA 95616

DETAILS:

*Founded: December 25th, 1888 at The Lewis School for Girls
(celebrated mid-March)*

Colors: Bronze, Pink, & Blue

Flower: Cream-colored Rose

Symbol: The Anchor

PHILANTHROPY:

Service for Sight



daviddeltagamma.wixsite.com/davidsg



@daviddeltagamma

KAΘ

Kappa Alpha Theta

LOCATION:

200 Parkway Circle, Davis, CA 95616

DETAILS:

Founded: January 27th, 1870 at DePauw University

Colors: Black and Gold

Flower: Black and Gold Pansy

Symbol: The Kite and Twin Stars

PHILANTHROPY:

Court Appointed Special Advocates (CASA)



davistheta.wixsite.com/zetanu



@ucdtheta

KKΓ

Kappa Kappa Gamma

LOCATION:

311 Russell Boulevard, Davis, CA 95616

DETAILS:

Founded: October 18th, 1870 at Monmouth College

Colors: Dark and Light Blue

Flower: Fleur-de-lis

Symbol: The Key

PHILANTHROPY:

Reading is Fundamental



daviskappakappagamma.wixsite.com/daviskkg



@daviskappakappagamma

ΠΒΦ

Pi Beta Phi

LOCATION:

445 Russell Boulevard, Davis, CA 95616

DETAILS:

Founded: April 28th, 1867 at Monmouth College

Colors: Wine and Silver Blue

Flower: Wine Carnation

Symbol: The Arrow

PHILANTHROPY:

Read > Lead > Achieve



www.ucdavis.pibetaphi.org



@davispietaphi

ΣΑΕΠ

Sigma Alpha Epsilon Pi

Sigma Alpha Epsilon Pi is a Jewish interest sorority founded on October 1st, 1998 at the University of California, Davis. Since its inception 22 years ago, Sigma has become a national sorority, expanding to include chapters across the nation.

Their motto is "Spirit, Strength and Sisterhood", and with these foundations they strive to create a sisterhood of strong women from all different backgrounds not only within themselves, but within the greater Davis community. They dedicate their time to community service and philanthropy events to raise money and awareness for the Cystic Fibrosis Foundation and American Jewish World Service. Their close-knit sorority creates sisters for life. From karaoke to roller skating nights, you always have a smile when you are with a Sigma.

SAEPi does not participate in Fall Formal Recruitment but has their own recruitment events!



DETAILS:

*Founded: October 1, 1998 at
UC Davis*

Colors: Blue and Gold

Flower: Iris

Symbol: The Paw

PHILANTHROPY:

*American Jewish World Service
Cystic Fibrosis Foundation*



www.saepidavis.org



[@saepidavis](https://www.instagram.com/saepidavis)

Sigma Alpha Epsilon Pi

RECRUITMENT INFORMATION

Recruitment Interest Form:

<https://docs.google.com/forms/d/e/1FAIpQLScjkluedtutnIVY8sKwYcn89hxLVHPLcD7krHzZlifjiPyMgQ/viewform>

SAEPi FALL RECRUITMENT

Welcome Night - Tue., Sep. 28, 7-8pm.

We are tie dye-ing to meet you!

Philanthropy Night - Wed., Sep. 29, 7-8pm.

Learn about our philanthropies and community service while decorating cookies with us!

Game Night - Thu., Sep. 30, 7-8pm.

Come play board games and get to know our sisters more!

Sigma Shabbat - Fri., Oct. 1, 6:15-8pm.

Meet us on campus at the MU flagpole and walk with us to Hillel for Vegas Shabbat with our sisters!

Dressy Desserts - Sat., Oct. 2, 11am-12pm.

Wear a fancy outfit and have a fancy dessert brunch with our sisters!

Bid Day - Sun., Oct. 3, 11am.

*DUES:

First Year Total: \$700 - \$1,000

Second Year Total: \$450 - \$750

New Member Fees:

Fall: \$400 - \$500

Winter: \$150 - \$250

Spring: \$150 - \$250

Dues are adjusted quarterly and will take COVID-19 into consideration.

INCLUDED IN QUARTERLY DUES:

- National Dues
- Initiation Fee
- Chapter Programming Events
- Sisterhoods
- Socials
- Chapter Education Materials
- T-Shirts
- Recruitment
- Supporting Other Organizations on Campus

For more information contact

SAEPi's VP of Recruitment: Abby Siegel

acsiegel@ucdavis.edu



FINANCE

Information

Please Note:

1. These dues may be subject to change
2. The New Member quarter is always the most expensive because of a lot of one-time fees
3. Fees quoted are based on estimates at the time of document preparation. Chapter payment plans may be offered; please discuss financial questions with the chapter finance officer.

Financial Definitions

Member Organization Fees

Badge fee:	Each member organization has a badge/pin. Some organizations require a member to purchase a badge and others include it in the initiation fee. Badges may be very simple or jeweled. If a member is purchasing her badge, she determines how much or little she would like to spend.
Per capita fee:	Fee paid to inter/national organizations per member to support overall sorority operations.
Technology fee:	These funds support the member organization database, social media and other technologies.

Chapter Fees

Assessment:	A chapter may vote to support an activity/event/cause that is not included in the chapter budget and the expense would be assessed per member.
Campus obligation	These funds are used when a chapter is asked to donate funds to other organizations and/or fundraising opportunities on campus.
Chapter dues:	These monies fund member activities including programming, recruitment, chapter supplies and chapter operations.
Composite:	An annual photograph is taken of each chapter's membership. This expense can be included in chapter dues or billed separately.
Initiation fee:	Fee paid to finalize initial membership in the organization.
Liability/risk management insurance:	This fee covers insurance-related costs for the safety of members, their guests and sorority property. Funds may also be used for special programming relating to risk management concerns on campus or within the chapter.
New member fee:	Fee paid to establish membership in the organization.
Panhellenic dues:	These funds are used to support Panhellenic operations. Examples of items that may be included in the Panhellenic budget are attending conferences, office operations, marketing and electronic media.
Parking permit:	Parking is typically limited at chapter houses. Spaces are allocated by each chapter to members based on criteria set by the leadership and/or chapter corporation.
Philanthropy fee:	Philanthropy fee: Each chapter has a philanthropy and some have local causes they support. This fee can be included in chapter dues or billed separately.
Purchase fund:	This fund is set up at the beginning of each term to pay for things not included in chapter dues. It may be used to purchase T-shirts, sorority paraphernalia or attend optional social functions.
Social fees:	Social functions not included in chapter dues are billed out individually based upon the cost of event(s).

Facility Fees

House corporation fee	These funds are used to support chapter property and physical plant. Often this is a one-time fee paid prior to initiation.
Parlor/House usage fee:	The entire membership has access to the house and thus the property is subject to a great deal of wear and tear. This fee is used primarily for care and maintenance of the property and furnishings in the common areas of the chapter facility.
Security fee:	Special security staff may be employed to protect chapter property, members and guests. Typically, all members, not just those living in the house, would be asked to help cover this expense.

Alpha Chi Omega

Financial and Housing Information Form

Sorority: Alpha Chi Omega

Campus: University of California, Davis

Chapter Fees for the 2020-2021 School Year

I. New Member Fees: \$ 560.33

NOTE: All items included in the New Member Fees (above) are listed and itemized in the chart below. The items will vary for each sorority. The amount for each term should be all-inclusive.

Inter/national fee:	\$303.33	Badge fee:	\$160	T-shirts:	\$0
Sisterhood events:	\$0	Meal plan:	\$0	chapter dues:	\$72
Social/special events:	\$0	Parlor fee:	\$0	Other:	\$
Philanthropy events:	\$0	Technology fee:	\$0	Other:	\$

Amount due on Bid Day:	\$	Amount due within XX days of pledging:	\$
------------------------	----	--	----

II. Members Residing IN HOUSE: Fall \$ 1793.33-1808.33 per quarter

NOTE: All items included in the academic terms (above) are listed and itemized in the chart below. The items will vary for each sorority. The amount for each term should be all-inclusive.

Inter/national fee:	\$73.33 per quarter	Badge fee:	\$0	T-shirts:	\$0
Sisterhood events:	\$0	Meal plan:	\$0	Chapter dues:	\$45 / \$60 / \$60
Social/special events:	\$0	Parlor fee:	\$0	Dues to Support FO:	\$25 / \$0 / \$0
Philanthropy events:	\$0	Technology fee:	\$0	Room Rent:	\$1650 per quarter (including 400\$ deposit)

Sorority residency requirement: none, unless specified by executive member position

III. Members Residing OUT OF HOUSE: Fall \$ 178.33-193.33 per quarter

NOTE: All items included in the academic terms (above) are listed and itemized in the chart below. The items will vary for each sorority. The amount for each term should be all-inclusive.

Inter/national fee:	\$73.33 per quarter	Badge fee:	\$0	T-shirts:	\$0
Sisterhood events:	\$0	Meal plan:	\$0	Chapter dues:	\$45 / \$60 / \$60
Social/special events:	\$0	Parlor fee:	\$0	Dues to support FO:	\$25 / \$60 / \$60
Philanthropy events:	\$0	Technology fee:	\$0	Other:	\$

Fees quoted are based on estimates at the time of document preparation. Chapter payment plans may be offered; please discuss financial questions with the chapter finance officer.

See financial definitions on the last page.

Alpha Chi Omega

Campus Fees

Campus housing, including room and board per term: \$ ___n/a_____

Items included in per-term range amount are:

room, meal plan(s), deposit, parking permit, wireless internet, air conditioning and ___n/a_____.

Chapter Fees Normally

I. New Member Fees: \$ ___964.33_____

NOTE: All items included in the New Member Fees (above) are listed and itemized in the chart below. The items will vary for each sorority. The amount for each term should be all-inclusive.

Inter/national fee:	\$ 303.33	Badge fee:	\$169	T-shirts:	\$
Sisterhood events:	\$	Meal plan:	\$	Chapter dues:	\$225
Social/special events:	\$5	Parlor fee:	\$	Dues to support FO:	\$242
Philanthropy events:	\$20	Technology fee:	\$	Other:	\$

Amount due on Bid Day:	\$	Amount due within XX days of pledging:	\$
------------------------	----	--	----

TOTAL \$964.33 DUE BEFORE INITIATION

II. Members Residing IN HOUSE: Fall \$ ___2198 per quarter_____

NOTE: All items included in the academic terms (above) are listed and itemized in the chart below. The items will vary for each sorority. The amount for each term should be all-inclusive.

Inter/national fee:	\$ 73.33 per quarter	Badge fee:	\$0	T-shirts:	\$0
Sisterhood events:	\$	Meal plan:	\$0	Chapter dues:	\$175per quarter
Social/special events:	\$5	Parlor fee:	\$0	Dues to support FO:	\$242per quarter
Philanthropy events:	\$20	Technology fee:	\$0	Room rent:	\$1683 per quarter (including \$400 deposit)

Sorority residency requirement: _____

III. Members Residing OUT OF HOUSE: Fall \$ ___515.33 per quarter_____ Spring \$ _____

NOTE: All items included in the academic terms (above) are listed and itemized in the chart below. The items will vary for each sorority. The amount for each term should be all-inclusive.

Inter/national fee:	\$73/33	Badge fee:	\$0	T-shirts:	\$0
Sisterhood events:	\$0	Meal plan:	\$0	Chapter dues:	\$175
Social/special events:	\$5	Parlor fee:	\$0	Dues to support FO:	\$242
Philanthropy events:	\$20	Technology fee:	\$0	Other:	\$

Alpha Delta Pi

Financial and Housing Information Form

Sorority: Alpha Delta Pi

Campus: UC Davis

Chapter Fees for the 2021-2022 School Year

I. New Member Fees: \$1,278.00

NOTE: All items included in the New Member Fees (above) are listed and itemized in the chart below. The items will vary for each sorority. The amount for each term should be all-inclusive.

Chapter Dues:	\$ 620.00	Badge Fee:	\$ 168.00	Alpha Fee:	\$ 103.00
Building fund Fee:	\$ 75.00	Initiation Fee:	\$ 142.00	Out of House Rent:	\$ 160.00
Panhellenic Dues:	\$ 10.00	Other:	\$	Other:	\$
Other:	\$	Other:	\$	Other:	\$

Amount due on Bid Day:	\$ n/a	Amount due within 2 days of pledging:	\$ 103.00
------------------------	--------	---------------------------------------	-----------

II. Initiated Members Residing IN HOUSE:

Fall amounts vary based on room assignment

Spring varies based on room assignment

NOTE: All items included in the academic terms (above) are listed and itemized in the chart below. The items will vary for each sorority. The amount for each term should be all-inclusive.

Chapter Dues:	\$ 620.00	Panhellenic Dues:	\$ 10.00	Building Fund Fee:	\$ 75.00
Delta Member Fee:	\$ 120.00	Rent:	\$ 4,215 - \$ 5,415	Other:	\$
Other:	\$	Other:	\$	Other:	\$
Other:	\$	Other:	\$	Other:	\$

Sorority residency requirement: **House must be full**

III. Initiated Members Residing OUT OF HOUSE: Fall \$985.00 Spring \$875.00

NOTE: All items included in the academic terms (above) are listed and itemized in the chart below. The items will vary for each sorority. The amount for each term should be all-inclusive.

Chapter Dues:	\$ 620.00	Panhellenic Dues:	\$ 10.00	Building Fund Fee:	\$ 75.00
Delta Member Fee:	\$ 120.00	Out of House Rent:	\$ 160.00	Other:	\$
Other:	\$	Other:	\$	Other:	\$
Other:	\$	Other:	\$	Other:	\$

Campus Fees

Campus housing, including room and board per term: \$ ___ n/a ___

Items included in per-term range amount are:

Fees quoted are based on estimates at the time of document preparation. Chapter payment plans may be offered; please discuss financial questions with the chapter finance officer.

See financial definitions on the last page.

Alpha Phi

Financial and Housing Information Form

Sorority: Alpha Phi

Campus: University of California, Davis

Chapter Fees for the 2020-2021 School Year

I. New Member Fees: \$ 575.73

NOTE: All items included in the New Member Fees (above) are listed and itemized in the chart below. The items will vary for each sorority. The amount for each term should be all-inclusive.

Inter/national fee:	\$1.49	Badge fee:	\$70	T-shirts:	\$N/A
Sisterhood events:	N/A	Dues:	\$94.28 (\$377 winter & spring)	International New Member Fee:	\$55
Social/special events:	N/A	Parlor fee:	\$30 (\$120 winter and Spring)	Chapter bond	\$310(\$155 due fall quarter and \$155 due winter quarter)
Philanthropy events:	N/A	Technology fee:	N/A	Initiation Fee	\$170

Amount due on Bid Day:	\$0	Amount due within ~30 days of pledging:	\$Billz sill go out on November 1st and their first payment will be due on the 15th of November. \$573.73 is what will be due for fall (November 15th)
------------------------	-----	---	--

The Following is based on a virtual Fall, non-virtual winter and non-virtual spring quarter (subject to change):

Fees quoted are based on estimates at the time of document preparation. Chapter payment plans may be offered; please discuss financial questions with the chapter finance officer.

See financial definitions on the last page.

Alpha Phi

Epsilon Rho Chapter of Alpha Phi 2021-2022 Billing Schedule

Live Out

Quarter Payment Plan

Due November 1, 2021	\$575.74
Due December 15, 2021	\$652.00
Due March 15, 2022	\$497.00
TOTAL COST - QUARTER PLAN:	<u>\$1,724.73</u>

Installment Payment Plan

Due November 1, 2021	\$441.11
Due November 15, 2021	\$144.63
Due December 15, 2021	\$222.33
Due January 15, 2022	\$222.33
Due February 15, 2022	\$222.34
Due March 15, 2022	\$170.67
Due April 15, 2022	\$170.67
Due May 15, 2022	\$170.66
TOTAL COST - INSTALLMENT PLAN	<u>\$1,764.74</u>

* IF THE FINANCIAL AID BOX IS CHECKED ON THE FINAL PAGE OF THE MEMBERSHIP/FINANCIAL AGREEMENT, DUE DATES WILL BE EXTENDED TO JANUARY 15, 2022 FOR WINTER QUARTER AND APRIL 15, 2022 FOR SPRING QUARTER. **THE FINANCIAL CONTRACT MUST BE SIGNED, RETURNED AND THE APPROPRIATE BOX CHECKED IN ORDER TO RECEIVE THIS PAYMENT EXTENSION.**

Alpha Phi

II. Members Residing IN HOUSE: **Fall \$ total \$1995.52 (double) Spring and winter \$377 just for dues. Live in (double) yearly total: \$6,229.13.**

NOTE: All items included in the academic terms (above) are listed and itemized in the chart below. The items will vary for each sorority. The amount for each term should be all-inclusive.

Inter/national fee:	\$116.49	Badge fee:	N/A	Recruitment T-shirts:	\$60
Sisterhood events:	N/A	Meal plan:	N/A	Rent:	\$5,355
Social/special events:	N/A	Parlor fee:	\$0 no parlor dues for girls who live in	Dues	\$94.25 (in the event of virtual Fall)
Philanthropy events:	N/A	Technology fee:	N/A	Other:	N/A

Sorority residency requirement: Executive Council is Required to live in the chapter house unless they are able to find another active member to take their spot in chapter house.

III. Members Residing OUT OF HOUSE: **Fall \$ dues 94.25, total due is \$265.73 Winter: dues \$377.00 and winter is \$497. Spring dues \$377.00 and Spring total is \$497.00.**

NOTE: All items included in the academic terms (above) are listed and itemized in the chart below. The items will vary for each sorority. The amount for each term should be all-inclusive.

Inter/national fee:	\$116.49	Badge fee:	N/A	T-shirts:	\$60
Sisterhood events:	N/A	Meal plan:	N/A	Other:	\$377
Social/special events:	N/A	Parlor fee:	\$120 Winter and Spring	Other:	N/A
Philanthropy events:	N/A	Technology fee:	N/A	Other:	N/A

Campus Fees

Campus housing, including room and board per term: **N/A**

Items included in per-term range amount are: **N/A**

room, meal plan(s), deposit, parking permit, wireless internet, air conditioning: **N/A**

Chapter Fees Normally

I. New Member Fees: **\$ 1,113.49**

NOTE: All items included in the New Member Fees (above) are listed and itemized in the chart below. The items will vary for each sorority. The amount for each term should be all-inclusive.

Inter/national fee:	\$1.49	Badge fee:	\$70	Dues:	\$377
Sisterhood events:	N/A	Meal plan:	N/A	New Member Fee:	\$65
Social/special events:	N/A	Parlor fee:	\$120	Chapter Bond:	\$310 (½ in the Fall ½ Winter)
Philanthropy events:	N/A	Technology fee:	N/A	Initiation Fee	\$170

Amount due on Bid Day:	\$0	Amount due within ~30 days of pledging:	\$ entire fall quarter
------------------------	-----	---	------------------------

II. Members Residing IN HOUSE :**\$948.49**

Inter/national fee:	\$116.49	Badge fee:	n/a	T-shirts:	\$
---------------------	----------	------------	-----	-----------	----

Alpha Phi

Sisterhood events:	N/A	Meal plan:	N/A	Recruitment Clothing:	\$60
Social/special events:	N/A	Parlor fee:	\$0 girls who live in don't pay parlor fees	Rent:	\$5355
Philanthropy events:	N/A	Technology fee:	N/A	Other:	N/A

PLEASE NOTE: There is a prepaid rent fee that is charged the quarter before living in (spring quarter the year before. This room reservation fee is \$595 for a double.)

Sorority residency requirement: Executive council is required to live in the chapter house unless they are able to find another active member to take their spot in the chapter house.

III. Members Residing OUT OF HOUSE: **Fall \$673.48 Winter: \$497.00 Spring \$ 497.00**

NOTE: All items included in the academic terms (above) are listed and itemized in the chart below. The items will vary for each sorority. The amount for each term should be all-inclusive.

Total yearly chapter dues: \$1,131.00

Inter/national fee:	\$116.49	Badge fee:	N/A	Recruitment T-shirts:	\$60
Sisterhood events:	N/A	Meal plan:	N/A	Other:	N/A
Social/special events:	N/A	Parlor fee:	\$360	Other:	N/A
Philanthropy events:	N/A	Technology fee:	N/A	Other:	N/A

***Fees quoted are based on estimates at the time of document preparation. Chapter payment plans may be offered; please discuss financial questions with the chapter finance officer. See financial definitions on the last page.*

OTHER CHARGES: (May not apply to all members)

Annual Discount (\$20) Discount given to members who pay their dues and fees in full for the year

Installment Payment Service Fee (\$5) Per payment charged to members who pay in installments

Late fee (\$25) charged in addition to Billhighway late fees

Abroad Dues (\$10) per quarter. (members will be charged international dues in addition to abroad dues if they are abroad during fall quarter.)

Chi Omega

Financial and Housing Information Form 2021-2022

Sorority: Chi Omega

Campus: University of California, Davis

Note: Amounts will differ based on whether Chi Omega can host in-person events. This number is subject to change accordingly based on the current pandemic. Additionally, Chi Omega is non-assessing and there are no extra fees required other than those that are outlined below.

NOTE: All items included in the New Member Fees (above) are listed and itemized in the chart below.

The items will vary for each sorority. The amount for each term should be all-inclusive.

New Member Fee Breakdown:

Total New Member Fees (Annual): \$2,290 -> Fall: \$1370, Winter: \$460, Spring: \$460

Chapter Fees

	Fall	Winter	Spring
Chapter Dues	\$295	\$295	\$295
What is Included in Chapter Dues?	Any activities hosted by the chapter (including sisterhood and philanthropy events, formal, external socials) Bid Day and Philanthropy Shirts	Any activities hosted by the chapter (including sisterhood and philanthropy events, formal, external socials)	Any activities hosted by the chapter (including sisterhood and philanthropy events, formal, external socials)

House Corp Fees

	Fall	Winter	Spring
Parlor Fee	\$165	\$165	\$165
Building Fee*	\$460	N/A	N/A

*one time fee

National Fees (National Fees are paid once per year, not quarterly)

	Fall	Winter	Spring
Initiation Fee*	\$125	N/A	N/A
National Chi Omega Member Fee	\$75	N/A	N/A
Risk Management Fee	\$100	N/A	N/A
Badge Fee*	\$150	N/A	N/A

*one time fee

Chi Omega

Note: With the exception of National Fees, Fees can be paid annually, quarterly, or monthly

Initiated Member Fee Breakdown:

Members Residing In-House

	Fall	Winter	Spring
Parlor Fee (House Corp)	\$0	\$0	\$0
Rent	\$450/month for Double \$550/month for Single	\$450/month for Double \$550/month for Single	\$450/month for Double \$550/month for Single
Chapter Dues	\$295	\$295	\$295
National Chi Omega Member Fee	\$75/annual	N/A	N/A
National Risk Management Fee	\$100/annual	N/A	N/A

Total Member Residing In-House Fees -> Fall: \$470 + Rent, Winter: \$295 + Rent, Spring: \$295 + Rent

Members Residing out of the House

	Fall	Winter	Spring
Parlor Fee (House Corp)	\$165	\$165	\$165
Chapter Dues	\$295	\$295	\$295
National Chi Omega Member Fee	\$75/annual	N/A	N/A
National Risk Management Fee	\$100/annual	N/A	N/A

Total Member Residing In-House Fees -> Fall:\$635, Winter: \$460, Spring: \$460

Note: House Corporation Parlor Fee - \$495 - paid by all New Members. House Corporation Fee pays for the operating expenses of the facility. House Corporation Building Fund Fee - \$460 – paid once by only New Members. The Building Fund Fee goes into the House Corporation Reserve Fund which is used for refurbishing and major repairs to the house.

Delta Delta Delta

Financial and Housing Information Form

Sorority: Delta Delta Delta

Campus: University of California, Davis

Chapter Fees for the 2021-2022 School Year

I. New Member Fees: \$850

NOTE: All items included in the New Member Fees (above) are listed and itemized in the chart below. The items will vary for each sorority. The amount for each term should be all-inclusive.

Chapter and Fraternity Dues	\$245	Badge fee:	\$95
Capital Improvement Fee	\$75	Initiation Fee (House Corporation)	\$65
Parlor fee:	\$105	New Member Fee (Fraternity)	\$48
Initiation Fee (Fraternity)	\$157	New Member Fee (House Corporation)	\$60

Amount due on Bid Day:	\$ 0	Amount due within 37 days of pledging:	\$850
------------------------	------	--	-------

II. Members Residing IN HOUSE (double up): Fall \$2,040 Winter \$1,790 Spring \$ 1,790 (single): Fall \$3,045 Winter \$2,795 Spring \$ 2,795

NOTE: All items included in the academic terms (above) are listed and itemized in the chart below. The items will vary for each sorority. The amount for each term should be all-inclusive.

Chapter and Fraternity Dues	\$745	Room Key Deposit (Fall Quarter Only)	\$250
Capital Improvement Fee	\$225	Meal plan:	\$1,260
Resident Fee (Double)	\$3,150	Other:	\$ 0
(Single)	\$6,165		

Sorority residency requirement: 10 members

III. Members Residing OUT OF HOUSE :Fall \$425 Winter \$425 Spring \$425

NOTE: All items included in the academic terms (above) are listed and itemized in the chart below. The items will vary for each sorority. The amount for each term should be all-inclusive.

Chapter and Fraternity Dues	\$735
Capital Improvement Fee	\$225
Parlor fee:	\$315

Campus Fees

Campus housing, including room and board per term: \$ _____

Items included in per-term range amount are:

Delta Gamma

Financial and Housing Information Form

Sorority: Delta Gamma
Campus: UC Davis: Delta Chi

Chapter Fees for the 2021-2022 School Year

I. New Member Fees: \$1,944.68

NOTE: All items included in the New Member Fees (above) are listed and itemized in the chart below. The items will vary for each sorority. The amount for each term should be all-inclusive.

Chapter Dues: (\$147.50/Quarter)	\$442.50	Board Fee: (\$75.00/Quarter)	\$225.00	Technology Fee: (Fall Quarter Only)	\$22.00
Chapter Obligation: (\$95.00/Quarter)	\$285.00	Social Activities: (Fall-\$99.50 Winter-\$100.00 Spring-\$100.00)	\$299.50	Payroll: (\$40.00/Quarter)	\$120.00
National Panhellenic Fee: (Fall Quarter Only)	\$4.00	New Member Fee: (Fall Quarter Only)	\$45.00	Greek Bill Fee: (Fall Quarter Only)	\$30.00
Campus Panhellenic: (\$10.00/Quarter)	\$30.00	Initiation Fee: (Fall Quarter Only)	\$135.00	Rent: (Winter-\$32.94 Spring-\$33.73)	\$66.68
Per Capita: (Fall Quarter Only)	\$90.00	House Corp Fee: (Fall Quarter Only)	\$150.00		

Amount due on Bid Day:	\$0	Amount due within XX days of pledging:	\$0
------------------------	-----	--	-----

II. Members Residing IN HOUSE: **Fall \$2,013 Winter \$1,867.50 Spring \$1,867.50**

NOTE: All items included in the academic terms (above) are listed and itemized in the chart below. The items will vary for each sorority. The amount for each term should be all-inclusive.

Chapter Dues: (\$147.50/Quarter)	\$442.50	Board Fee: (\$75.00/Quarter)	\$225.00	Greek Bill Fee: (Fall Quarter Only)	\$30.00
Chapter Obligation: (\$95.00/Quarter)	\$285.00	Social Activities: (Fall-\$99.50 Winter-\$100.00 Spring-\$100.00)	\$299.50	Per Capita: (Fall Quarter Only)	\$90.00
National Panhellenic Fee: (Fall Quarter Only)	\$4.00	Rent: (\$1,400.00/Quarter)	\$4,200	Payroll: (\$40.00/Quarter)	\$120.00
Campus Panhellenic: (\$10.00/Quarter)	\$30.00	Technology Fee: (Fall Quarter Only)	\$22.00		

Delta Gamma

Sorority residency requirement: 7 residents

III. Members Residing OUT OF HOUSE: **Fall \$645.56 Winter \$500.44 Spring \$501.23**

NOTE: All items included in the academic terms (above) are listed and itemized in the chart below. The items will vary for each sorority. The amount for each term should be all-inclusive.

**Some charges are exclusive to Fall & Spring Quarter*

Chapter Dues: (\$147.50/Quarter)	\$442.50	Board Fee: (\$75.00/Quarter)	\$225.00	Greek Bill Fee: (Fall Quarter Only)	\$30.00
Chapter Obligation: (\$95.00/Quarter)	\$285.00	Social Activities: (Fall-\$99.50 Winter-\$100.00 Spring-\$100.00)	\$299.50	Per Capita: (Fall Quarter Only)	\$90.00
National Panhellenic Fee: (Fall Quarter Only)	\$4.00	Technology Fee: (Fall Quarter Only)	\$22.00	Payroll: (\$40.00/Quarter)	\$120.00
Campus Panhellenic: (\$10.00/Quarter)	\$30.00	Rent: (Fall-\$32.56 Winter-\$32.94 Spring-\$33.73)	\$99.23		

Fees quoted are based on estimates at the time of document preparation. Chapter payment plans may be offered; please discuss financial questions with the chapter finance officer.

See financial definitions on the last page.

Campus Fees

Campus housing, including room and board per term: \$ _____

Items included in per-term range amount are:

room, meal plan(s), deposit, parking permit, wireless internet, air conditioning and _____.

Chapter Fees Normally

I. New Member Fees:

NOTE: All items included in the New Member Fees (above) are listed and itemized in the chart below. The items will vary for each sorority. The amount for each term should be all-inclusive.

Chapter Dues:		Sisterhood events: (Included in Chapter Dues)		Technology Fee:	
Chapter Obligation:		Social/special events:		Payroll:	
Inter/national fee:		New Member Fee:		Greek Bill Fee:	
Campus Panhellenic:		Initiation Fee		T-shirts(Included in Chapter dues):	

Delta Gamma

Per Capita:		House Corp Fee		Board Fee:	
-------------	--	----------------	--	------------	--

Amount due on Bid Day:		Amount due within XX days of pledging:	
------------------------	--	--	--

II. Members Residing IN HOUSE: **Fall Winter Spring**

NOTE: All items included in the academic terms (above) are listed and itemized in the chart below. The items will vary for each sorority. The amount for each term should be all-inclusive.

Chapter Dues:		Sisterhood events: (Included in Chapter Dues)		Greek Bill Fee:	
Chapter Obligation:		Social/special events:		T-shirts(Included in Chapter Dues):	
Inter/ national fee:		Rent:		Board Fee:	
Campus Panhellenic:		Technology Fee:		Other:	
Per Capita:		Payroll:		Other	

Sorority residency requirement: 9 residents

III. Members Residing OUT OF HOUSE: **Fall \$601.5 Winter \$455.5 Spring \$455.50**

NOTE: All items included in the academic terms (above) are listed and itemized in the chart below. The items will vary for each sorority. The amount for each term should be all-inclusive.

Chapter Dues:		Sisterhood events: (Included in Chapter Dues)		T-shirts(Included in Chapter Dues):	
Chapter Obligation:		Social/special events:		Board Fee:	
Inter/national fee:		Technology Fee:		Other:	
Campus Panhellenic:		Payroll:		Other:	
Per Capita:		GreekBill Fee:		Other:	

Kappa Alpha Theta

Financial and Housing Information Form

Sorority: _____ Kappa Alpha Theta _____

Campus: _____ University of California Davis _____

Chapter Fees for the 2020-2021 School Year

I. New Member Fees: \$ _____ 378.25 _____

NOTE: All items included in the New Member Fees (above) are listed and itemized in the chart below. The items will vary for each sorority. The amount for each term should be all-inclusive.

Inter/national fee:	\$75.00	Badge fee:	\$135.00	T-shirts:	\$
Sisterhood events:	\$	Meal plan:	\$	Other:	\$
Social/special events:	\$	Parlor fee:	\$	Other:	\$
Philanthropy events:	\$	Technology fee:	\$	Other:	\$

Amount due on Bid Day: \$ _____ Amount due within XX days of pledging: \$ _____

II. Members Residing IN HOUSE: Fall \$ _____ 2945.25 _____ Spring \$ _____ 2797.00 _____

NOTE: All items included in the academic terms (above) are listed and itemized in the chart below. The items will vary for each sorority. The amount for each term should be all-inclusive.

Inter/national fee:	\$75.00	Badge fee:	\$	T-shirts:	\$
Sisterhood events:	\$	Meal plan:	\$	Other:	\$
Social/special events:	\$	Parlor fee:	\$	Other:	\$
Philanthropy events:	\$	Technology fee:	\$	Other:	\$

Sorority residency requirement: _____

III. Members Residing OUT OF HOUSE: Fall \$ _____ 218.25 _____ Spring \$ _____ 80.00 _____

NOTE: All items included in the academic terms (above) are listed and itemized in the chart below. The items will vary for each sorority. The amount for each term should be all-inclusive.

Inter/national fee:	\$	Badge fee:	\$	T-shirts:	\$
Sisterhood events:	\$	Meal plan:	\$	Other:	\$
Social/special events:	\$	Parlor fee:	\$	Other:	\$
Philanthropy events:	\$	Technology fee:	\$	Other:	\$

Campus Fees

Campus housing, including room and board per term: \$ _____ 2778.00 _____

Items included in per-term range amount are:

room, meal plan(s), deposit, parking permit, wireless internet, air conditioning and _____ laundry _____.

Fees quoted are based on estimates at the time of document preparation. Chapter payment plans may be offered; please discuss financial questions with the chapter finance officer.

See financial definitions on the last page.

Kappa Alpha Theta

Chapter Fees Normally

I. New Member Fees: \$ _____ \$2,530.00 _____

NOTE: All items included in the New Member Fees (above) are listed and itemized in the chart below. The items will vary for each sorority. The amount for each term should be all-inclusive.

Inter/national fee:	\$ 300.00	Badge fee:	\$180.00	T-shirts:	\$
Sisterhood events:	\$	Meal plan:	\$	Other:	\$
Social/special events:	\$	Parlor fee:	\$	Other:	\$
Philanthropy events:	\$	Technology fee:	\$	Other:	\$

Amount due on Bid Day:	\$	Amount due within XX days of pledging:	\$
------------------------	----	--	----

II. Members Residing IN HOUSE: Fall \$ _____ \$3272.00 _____ Spring \$ _____ \$3033.00 _____

NOTE: All items included in the academic terms (above) are listed and itemized in the chart below. The items will vary for each sorority. The amount for each term should be all-inclusive.

Inter/national fee:	\$300.00	Badge fee:	\$	T-shirts:	\$
Sisterhood events:	\$	Meal plan:	\$	Other:	\$
Social/special events:	\$	Parlor fee:	\$	Other:	\$
Philanthropy events:	\$	Technology fee:	\$	Other:	\$

Sorority residency requirement: _____

III. Members Residing OUT OF HOUSE: Fall \$ _____ \$906.00 _____ Spring \$ _____ 722.00 _____

NOTE: All items included in the academic terms (above) are listed and itemized in the chart below. The items will vary for each sorority. The amount for each term should be all-inclusive.

Inter/national fee:	\$300.00	Badge fee:	\$	T-shirts:	\$
Sisterhood events:	\$	Meal plan:	\$	Other:	\$
Social/special events:	\$	Parlor fee:	\$	Other:	\$
Philanthropy events:	\$	Technology fee:	\$	Other:	\$

Kappa Kappa Gamma

Financial and Housing Information Form

Sorority: Kappa Kappa Gamma

Campus: UC Davis

Chapter Fees for the 2020-2021 School Year

I. New Member Fees: \$ 423.00

NOTE: All items included in the New Member Fees (above) are listed and itemized in the chart below. The items will vary for each sorority. The amount for each term should be all-inclusive.

Inter/national fee:	\$ 175.00	Badge fee:	\$ Starting at 48.00	T-shirts:	\$
Sisterhood events:	\$	Meal plan:	\$	Other: House Corporation Fee	\$ 200.00
Social/special events:	\$	Parlor fee:	\$	Other:	\$
Philanthropy events:	\$	Technology fee:	\$	Other:	\$

Amount due on Bid Day:	\$ 0	Amount due within 90 days of pledging:	\$ 423.00
------------------------	------	--	-----------

II. Members Residing IN HOUSE: Fall \$ 689 Spring \$ 332

NOTE: All items included in the academic terms (above) are listed and itemized in the chart below. The items will vary for each sorority. The amount for each term should be all-inclusive.

Inter/national fee:	\$ 92.00	Badge fee:	\$ 0	T-shirts:	\$ 75.00
Sisterhood events:	\$ 17.00	Meal plan:	\$ 0	Other: House Fee	\$ 360.00
Social/special events:	\$ 325.00	Parlor fee:	\$ 11.50	Other: Composite	\$ 45.00
Philanthropy events:	\$ 88.00	Technology fee:	\$ 7.50	Other:	\$

Sorority residency requirement: Chapter President, VP Standards, House Chairman, and New Member Chairman must live-in. Other spots are filled through an application.

III. Members Residing OUT OF HOUSE: Fall \$ 813 Spring \$ 406

NOTE: All items included in the academic terms (above) are listed and itemized in the chart below. The items will vary for each sorority. The amount for each term should be all-inclusive.

Inter/national fee:	\$ 92.00	Badge fee:	\$ 0	T-shirts:	\$ 75.00
Sisterhood events:	\$ 17.00	Meal plan:	\$ 0	Other: House/Maintenance Fees	\$ 510.00
Social/special events:	\$ 325.00	Parlor fee:	\$ 11.50	Other: Composite	\$ 45.00
Philanthropy events:	\$ 88.00	Technology fee:	\$ 7.50	Other:	\$

Campus Fees

Campus housing, including room and board per term: \$ Single: Fall \$1940, Winter \$1455, Spring \$1455

Items included in per-term range amount are: Double: Fall \$1840, Winter \$1380, Spring \$1380

room, meal plan(s), deposit, parking permit, wireless internet, air conditioning and _____.

Fees quoted are based on estimates at the time of document preparation. Chapter payment plans may be offered; please discuss financial questions with the chapter finance officer.

See financial definitions on the last page.

Kappa Kappa Gamma

Chapter Fees Normally

I. New Member Fees: \$ 423.00

NOTE: All items included in the New Member Fees (above) are listed and itemized in the chart below. The items will vary for each sorority. The amount for each term should be all-inclusive.

Inter/national fee:	\$ 175.00	Badge fee:	\$ Starting at \$48.00	T-shirts:	\$
Sisterhood events:	\$	Meal plan:	\$	Other: House Corporation Fee	\$ 200.00
Social/special events:	\$	Parlor fee:	\$	Other:	\$
Philanthropy events:	\$	Technology fee:	\$	Other:	\$

Amount due on Bid Day:	\$ 0	Amount due within 90 days of pledging:	\$ 423
------------------------	------	--	--------

II. Members Residing IN HOUSE: Fall \$ 808 Spring \$ 404

NOTE: All items included in the academic terms (above) are listed and itemized in the chart below. The items will vary for each sorority. The amount for each term should be all-inclusive.

Inter/national fee:	\$ 92.00	Badge fee:	\$ 0	T-shirts:	\$ 75.00
Sisterhood events:	\$ 83.00	Meal plan:	\$ 0	Other: House Fee	\$ 360.00
Social/special events:	\$ 450.00	Parlor fee:	\$ 11.50	Other: Composite	\$ 45.00
Philanthropy events:	\$ 88.00	Technology fee:	\$ 7.50	Other:	\$

Sorority residency requirement: Chapter President, VP Standards, House Chairman, and New Member Chairman must live-in. Other spots are filled through an application.

III. Members Residing OUT OF HOUSE: Fall \$ 908 Spring \$ 454

NOTE: All items included in the academic terms (above) are listed and itemized in the chart below. The items will vary for each sorority. The amount for each term should be all-inclusive.

Inter/national fee:	\$ 92.00	Badge fee:	\$ 0	T-shirts:	\$ 75.00
Sisterhood events:	\$ 83.00	Meal plan:	\$ 0	Other: House/Maintenance Fees	\$ 510.00
Social/special events:	\$ 450.00	Parlor fee:	\$ 11.50	Other: Composite	\$ 45.00
Philanthropy events:	\$ 88.00	Technology fee:	\$ 7.50	Other:	\$

Pi Beta Phi

Financial and Housing Information Form

Sorority: Pi Beta Phi (CA Theta)

Campus: UC Davis

Chapter Fees for the 2020-2021 School Year

I. New Member Fees: \$ 510 (Plus Live-Out dues)

NOTE: All items included in the New Member Fees (above) are listed and itemized in the chart below. The items will vary for each sorority. The amount for each term should be all-inclusive.

House Fund Fee	\$250	Fraternity New Member Fee	\$35
Fraternity New Member Supplies	\$25		\$
Chapter Initiation Fee	\$75		\$
Fraternity Initiation Fee	\$125		\$

Amount due on Bid Day:	\$0	Amount due within 30 days of pledging:	\$99
------------------------	-----	--	------

II. Members Residing IN HOUSE: Fall \$ 2151 Winter \$ 2030 Spring \$ 2119

NOTE: All items included in the academic terms (above) are listed and itemized in the chart below. The items will vary for each sorority. The amount for each term should be all-inclusive.

Campus Obligations	\$10	Insurance	\$28
Chapter Dues	\$220	NPC Dues	\$4
Fraternity Dues	\$55	Room & Board	\$1800
Greekbill Fee	\$9	Technology fee:	\$25

Sorority residency requirement: No live in requirement

III. Members Residing OUT OF HOUSE: Fall \$ 526 Winter \$ 405 Spring \$ 494

NOTE: All items included in the academic terms (above) are listed and itemized in the chart below. The items will vary for each sorority. The amount for each term should be all-inclusive.

Campus Obligations	\$10	Insurance	\$28
Chapter Dues	\$220	NPC Dues	\$4
Fraternity Dues	\$55	Facility Fee	\$175
Greekbill Fee	\$9	Technology fee:	\$25

Campus Fees

Campus housing, including room and board per term: \$ 1800

Items included in per-term range amount are:

room, wireless internet, utilities, air conditioning, TV

Fees quoted are based on estimates at the time of document preparation. Chapter payment plans may be offered; please discuss financial questions with the chapter finance officer.

See financial definitions on the last page.

Pi Beta Phi

Chapter Fees Normally

I. New Member Fees: \$ _ Same as Above _____

NOTE: All items included in the New Member Fees (above) are listed and itemized in the chart below. The items will vary for each sorority. The amount for each term should be all-inclusive.

Inter/national fee:	\$	Badge fee:	\$	T-shirts:	\$
Sisterhood events:	\$	Meal plan:	\$	Other:	\$
Social/special events:	\$	Parlor fee:	\$	Other:	\$
Philanthropy events:	\$	Technology fee:	\$	Other:	\$

Amount due on Bid Day:	\$	Amount due within XX days of pledging:	\$
------------------------	----	--	----

II. Members Residing IN HOUSE: Fall \$ _ Same as Above _____ Spring \$ _ Same as Above _____

NOTE: All items included in the academic terms (above) are listed and itemized in the chart below. The items will vary for each sorority. The amount for each term should be all-inclusive.

Inter/national fee:	\$	Badge fee:	\$	T-shirts:	\$
Sisterhood events:	\$	Meal plan:	\$	Other:	\$
Social/special events:	\$	Parlor fee:	\$	Other:	\$
Philanthropy events:	\$	Technology fee:	\$	Other:	\$

Sorority residency requirement: _____

III. Members Residing OUT OF HOUSE: Fall \$ _ Same as Above _____ Spring \$ _ Same as Above _____

NOTE: All items included in the academic terms (above) are listed and itemized in the chart below. The items will vary for each sorority. The amount for each term should be all-inclusive.

Inter/national fee:	\$	Badge fee:	\$	T-shirts:	\$
Sisterhood events:	\$	Meal plan:	\$	Other:	\$
Social/special events:	\$	Parlor fee:	\$	Other:	\$
Philanthropy events:	\$	Technology fee:	\$	Other:	\$

REGISTER

REGISTER

REGISTER

REGISTER

REGISTER

REGISTER

REGISTER

REGISTER

REGISTER

GO TO:

www.davispanhellenic.org